



Kit Contents

	Description	Part No	Pcs
1	Shock absorber left	MEV 1Y46	1
2	Shock absorber right	MEV 2Y46	1
3	Reservoir clamp	25653-01	4
4	M6 screw	01046-61	4
5	40 mm washer	10418-04	1
6	Sticker set	10207-01	1
7	Owners manual	07440-06	1

👁 Note!

Please note that during storage and transportation, especially at high ambient temperature, some of the oil and grease used for assembling may leak and stain the packaging. This is in no way detrimental to the product, wipe off the excessive oil/grease with a cloth.

👁 Note!

It may be needed to install wheel spacers on the vehicle in order to clear all suspension components.

👁 Note!

Please note that this image is a general representation of the product and may differ slightly from your product.

👁 Note!

Before installing this product, check the contents of the kit. If anything is missing, please contact an Öhlins dealer.

⚠ Warning!

Before installing this product, read the Öhlins Owner's Manual. The shock absorber is an important part of the vehicle and the vehicle stability.

Shock absorber Kit for Mercedes G-class W463, 0-3" lift, 1990-2018 - front

MEV 1Y46

MEV 2Y46

Mounting Instructions



MOUNTING INSTRUCTIONS

⚠ Warning!

We strongly recommend to have an Öhlins dealer install this product.

⚠ Warning!

If working on a raised vehicle, ensure that it is securely supported to prevent it from tipping over.

👁 Note!

When working on this product, see the Vehicle Service Manual for vehicle specific procedures and important data.

1

Raise the vehicle and put the front axle on jack stands.

⚠ Warning!

Ensure that it is securely supported.

2

Remove the front wheels.

3

Loosen the upper and lower shock mounts and remove the shock.

👋 Caution!

Make sure the front axle does not drop and stretches the brake hoses.

4

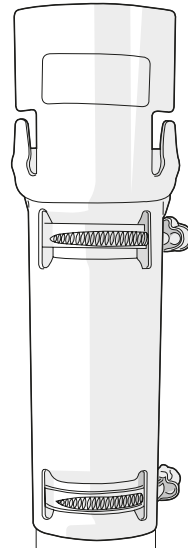
Install the Öhlins shock on the vehicle. Make sure the cylinderhead is mounted so the hose outlet is faced away from the engine and exhaust manifolds. Clamp the reservoir on the shock body with the reservoir brackets and M6 bolts. Fit the brackets so the markings are on the shock body side for correct diameter fitment (see fig 3). Make sure the reservoir is positioned as Figure 1 to avoid the wheel to hit the reservoir while turning.

5

On the right side, install the shock to the upper attachment and then the large washer (diameter 40 mm) and then the OEM nut. On the left side, you might need to trim a piece of the inner fender to be able to fit the reservoir on the shock body and rotate it towards the frame and away from the tire.



Figure 2



👁 Note!

If your vehicle is equipped with OEM shock heat shields it is recommended to install them on the Öhlins shock pictured in Figure 2.

MOUNTING INSTRUCTIONS

6

Install the wheels and steer lock to lock. Make sure the wheels don't hit the reservoirs.

Note!

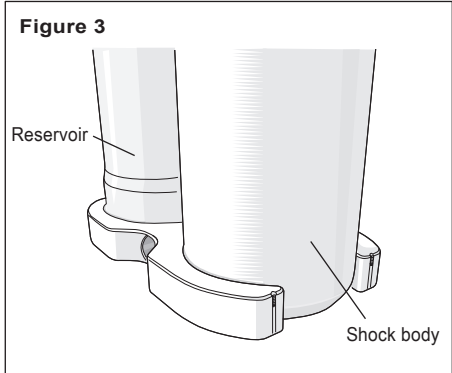
Make sure that all bolts are tightened to the correct torque and that nothing fouls or restricts movement of the shock when it is being fully compressed or extended. Test this over the whole steering range from lock to lock.

7

Make sure that all removed parts are reinstalled in the same way as they were before the installation of the Öhlins shock absorber.

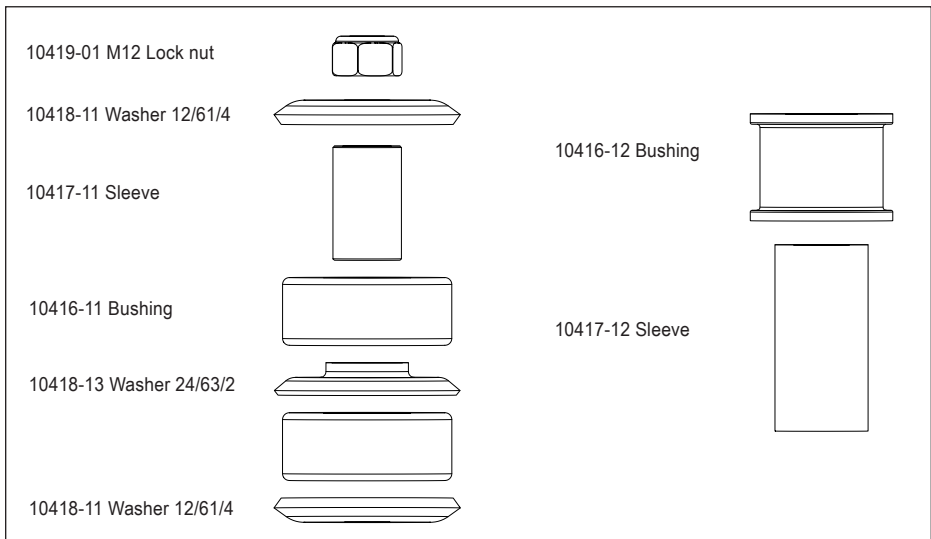
Note!

If you need to replace these components, we highly recommend you to send the shocks to your Öhlins service center and have them replaced.



Note!

Make sure the grooves on the reservoir brackets are fitted to the shock body.



ADJUSTMENTS

⚠ Warning!

Before riding, always make sure that the basic settings made by Öhlins are according to recommended Set-up Data. Read about adjustments and setting up in the Öhlins Owner's Manual before you make any adjustments. Contact an Öhlins dealer if you have any questions about setting up.

SETUP DATA

Recommended set-up		
Compression damping	15	clicks
Rebound damping	15	clicks

Figure 4



Öhlins products are subject to continuous improvement and development, therefore, although these instructions include the most up-to-date information available at the time of printing, minor updates may occur.

To find the latest information contact an Öhlins distributor. Please contact Öhlins if you have any questions regarding the contents in this document.

Part no. MI_MEVMY46_0
Issued 2023-05-05

© Öhlins Racing AB. All rights reserved. Any reprinting or unauthorized use without the written permission of Öhlins Racing AB is prohibited.

Öhlins Racing AB
Box 722
S-194 27 Upplands Väsby, Sweden
Phone +46 8 590 025 00
fax +46 8 590 025 80



www.ohlins.com



Kit Contents

	Description	Part No	Pcs
1	Shock absorber left	MEV 3Y46	1
2	Shock absorber right	MEV 4Y46	1
3	Reservoir clamp	25653-01	4
4	M6 screw	01046-61	4
5	Dust boot	10216-03	2
6	Tie-rop	00231-02	4

👁 Note!

It may be needed to install wheel spacers on the vehicle in order to clear all suspension components.

👁 Note!

Please note that this image is a general representation of the product and may differ slightly from your product.

👁 Note!

Please note that during storage and transportation, especially at high ambient temperature, some of the oil and grease used for assembling may leak and stain the packaging. This is in no way detrimental to the product, wipe off the excessive oil/grease with a cloth.

👁 Note!

Before installing this product, check the contents of the kit. If anything is missing, please contact an Öhlins dealer.

⚠ Warning!

Before installing this product, read the Öhlins Owner's Manual. The shock absorber/front fork/steering damper is an important part of the vehicle and the vehicle stability.

Shock absorber Kit for Mercedes G-class W463, 0-3" lift, 1990-2018 - rear

MEV 3Y46

MEV 4Y46

Mounting Instructions



MOUNTING INSTRUCTIONS

⚠ Warning!

We strongly recommend to have an Öhlins dealer install this product.

⚠ Warning!

If working on a raised vehicle, ensure that it is securely supported to prevent it from tipping over.

👁 Note!

When working on this product, see the Vehicle Service Manual for vehicle specific procedures and important data.

1

Raise the vehicle and put the front axle on jack stands.

⚠ Warning!

Ensure that it is securely supported.

2

Remove the rear wheels.

3

Loosen the upper and lower shock mounts and remove the shock.

🚫 Caution!

Make sure the front axle does not drop and stretches the brake hoses.

4

Install the dust boot on the shock and tighten the tie-raps according to figure 3.

5

Install the Öhlins shock on the vehicle. Clamp the reservoir on the shock body with the aluminium clamps. The marking on the clamps shall be on the shock body side for correct diameter fitment (see figure 2).

6

Make sure the shock and reservoir are positioned as Figure 1 and that the hose outlets are facing inward the vehicle, away from the tire.



Figure 1

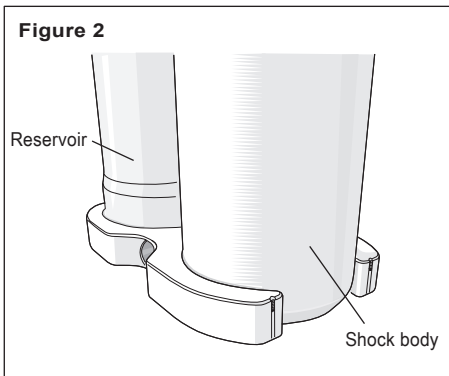


Figure 2

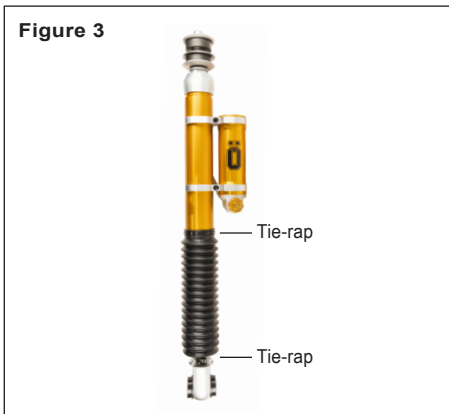


Figure 3

MOUNTING INSTRUCTIONS

👁 **Note!**

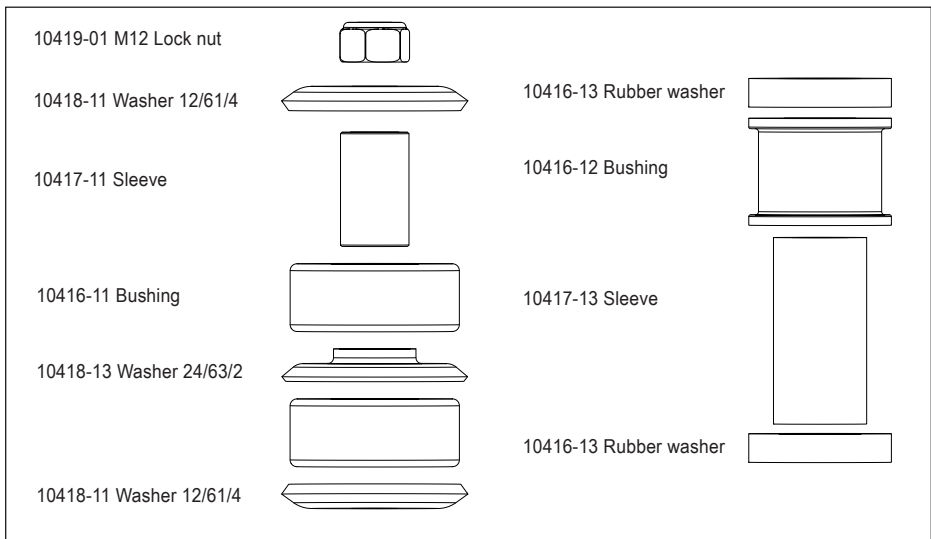
Make sure that all bolts are tightened to the correct torque and that nothing fouls or restricts movement of the shock when it is being fully compressed or extended.

7

Make sure that all removed parts are reinstalled in the same way as they were before the installation of the Öhlins shock absorber.

👁 **Note!**

If you need to replace these components, we highly recommend you to send the shocks to your Öhlins service center and have them replaced.



ADJUSTMENTS

⚠ Warning!

Before riding, always make sure that the basic settings made by Öhlins are according to recommended Set-up Data. Read about adjustments and setting up in the Öhlins Owner's Manual before you make any adjustments. Contact an Öhlins dealer if you have any questions about setting up.

SETUP DATA

Recommended set-up		
Compression damping	15	clicks
Rebound damping	15	clicks

Figure 4



Öhlins products are subject to continuous improvement and development, therefore, although these instructions include the most up-to-date information available at the time of printing, minor updates may occur.

To find the latest information contact an Öhlins distributor. Please contact Öhlins if you have any questions regarding the contents in this document.

Part no. MI_MEVMY46_0
Issued 2023-05-05

© Öhlins Racing AB. All rights reserved. Any reprinting or unauthorized use without the written permission of Öhlins Racing AB is prohibited.

Öhlins Racing AB
Box 722
S-194 27 Upplands Väsby, Sweden
Phone +46 8 590 025 00
fax +46 8 590 025 80



www.ohlins.com